

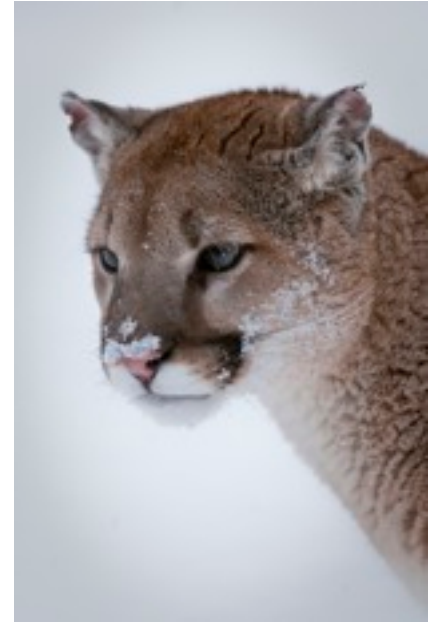
Welcome Photographers and Artists
Fall Colors and Up Close Wildlife Workshop
Triple D Game Farm Kalispell, Montana
Presented by Al Piecka Photography

September 18-21, 2010

Join freelance photographer Al Piecka for an exciting wildlife photo shoot at the Triple D Game Farm in Kalispell Montana. This workshop will not only assist you in developing your wildlife photo skills but also enable you to create a portfolio of stunning models.

In three days you will shoot thousands of great photographs to add to your portfolio. In addition you will be learning various techniques that will enhance your images. You will have the opportunity to shoot more prime, beautiful animals up close, in their natural settings near Glacier National Park, than you could otherwise experience in chance encounters in a lifetime. With the fall temperatures the Montana colors should be at their peak.

Triple D will guarantee at least 8 species of wildlife to be photographed. Wildlife models may include: grey and black wolves, bobcats, mountain lions, snow leopards, Canadian and Siberian Lynx, various species of fox, Siberian Tiger, grizzly and black bears and more.



About the Workshop



The workshop provides the opportunity to photograph at least 8 species of animals over 3 days in their natural habitat. On the evening of Sept.17 we will meet at the lodge and discuss the coming events, answer questions and review recommended shooting techniques for the coming days.

Each morning beginning on Sept.18, we will travel short distances from the main Lodge to naturally designed venues to photograph the animals in their natural settings. Your safety is of prime concern to the trainers. However, you will be closer to large cats, wolves etc than you ever thought possible. All the compounds are several acres in size and although fenced to help control the animals, you will always photograph from inside the fence. After a morning shoot we will

return to the main lodge for a provided lunch and to discuss any questions that may have arisen. Then we will return to the field for an afternoon shoot.

The workshop is limited to 8 participants so there will be no crowded shooting conditions and you will receive the personal attention you need during and after the shoots. You will be free to move around for various shooting angles and to obtain various backgrounds, with a few restrictions based on safety concerns. Each evening you will have time to eat, download your days images and select a few for the evenings critique. Artists can use this time for sketching of the days experience. During the critiques we will discuss exposures, compositions and also discuss some of the basic image adjustment techniques possible in Adobe



Lightroom and answer any questions you may have. There is no set time limit for the evening critiques. As the result of these evening critiques, you will see your images improve throughout the workshop.

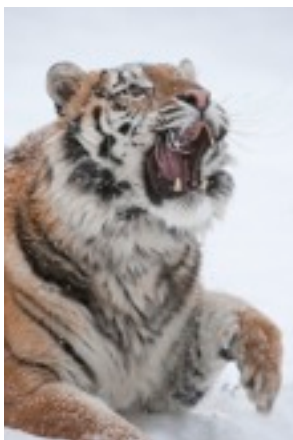


We will shoot Sept. 18, 19, 20 with the 21st reserved as a weather day if necessary. If the 21st is not needed to make up for a weather day it will be available for additionally purchased sessions or the workshop will end at noon. Following the Workshop, Triple D has scheduled a Bird of Prey shoot and a Horse Roundup Sept 22nd and 23rd and is available for those wanting to stay.

Workshop Costs:

The cost of the workshop is \$ US 950 dollars and a \$300 deposit is required upon registration. The \$650 remainder is due by Aug. 25, 2010. Lunch is provided on Sept. 18, 19, 20. Time and weather permitted, additional sessions will be available for \$100/session on Sept. 21. Accompanying non-photographer is \$50 per day.

Additional notes:



As mentioned, the workshop size is limited to 8 to ensure maximum flexibility for obtaining all types of shots. The staff is extremely helpful and will work to the best of their ability to get you tremendous shots. If possible, they will accommodate special requests such as positioning for head shots, close ups, animal behavior etc.

You should bring your laptop or other means to download your images, spare batteries and a lot of memory cards. You should also bring 8-10 photos to critique in case we have a weather day layoff.

Lodging:

There is cozy lodging available at the Triple D Log Guest Cabin. The cabin has 4 bedrooms, two baths, setting room w/fireplace, kitchen and laundry area. Arrangements can be made with Triple D. Triple D also has discount rates

available at several Kalispell hotels and motels. Please contact me or Triple D for more information.

Triple D Game Farm
190 Drake Drive
Kalispell, MT 59903
496-755=9653

Al Piecka Photography
406 Perry Ave N
Wenatchee, WA 98802
509-470-1669
abpiecka@hotmail.com
alpieckaphotography.com

