

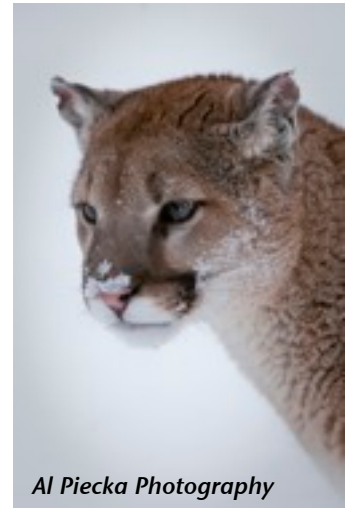
Welcome Photographers and Artists
Winter Wildlife at It's Best
Triple D Game Farm Kalispell, Montana
Presented by Free Lance Photographer Al Piecka



February 3-6, 2012

Join me for 3 days of the finest Winter Wildlife photography imaginable. Exciting animals in prime condition, perfect winter conditions, excellent venues ..what more is there to expect...oh .. no long lens necessary

In three days you will shoot thousands of great photographs to add to your portfolio. In addition you will be learning various techniques that will enhance your images. You will have the opportunity to shoot more prime, beautiful animals up close, in their natural settings near Glacier National Park, than you could otherwise experience in chance encounters in a lifetime.



Triple D will guarantee at least 8 species of wildlife to be photographed. Wildlife models include: grey and black wolves, mountain lions, snow leopards, Lynx, fox, Siberian Tiger, grizzly bears and more. To photograph a Snow Leopard in natural settings is worth the trip in itself.



About the Workshop

The workshop provides the opportunity to photograph at least 8 species of animals over 3 days in their natural habitat. On the evening of February 2 we meet at the lodge and discuss the coming events, answer questions and review recommended shooting techniques for the coming days.

Each morning beginning on Feb. 3, we will travel short distances from the main Lodge to naturally designed venues to photograph the animals in their natural settings. Your safety is of prime concern to the

trainers, however, you will be closer to large cats, wolves etc than you ever thought possible. All the compounds are several acres in size and although fenced to help control the animals, you will always photograph from inside the fence. After a morning shoot we will return to the main lodge for a provided lunch and to discuss any questions that may have arisen. Then we will return to the field for an afternoon shoot.

The workshop is limited to 8 participants so there will be no crowded shooting conditions and you will receive the personal attention you need during and after the shoots. You will be free to move around for various shooting angles and to obtain various backgrounds, with a few restrictions based on safety concerns.

Each evening you will have time to eat, download your days images and select a few for the evenings critique. Artists can use this time for sketching of the days experience. During the critiques we will discuss exposures, compositions and also discuss some of the basic image adjustment techniques





Al Piecka Photography

possible in Adobe Lightroom and answer any questions you may have. There is no set time limit for the evening critiques. As the result of these evening critiques, you will see your images improve throughout the workshop. We will shoot Feb. 3,4, 5 with the 6 th reserved as a weather day if necessary. If the 6 th is not needed to make up for a weather day it will be available for additionally purchased sessions or the workshop will end at noon.

Workshop Costs:

The cost of the workshop is \$1295 US dollars and a \$200 deposit is required upon registration. The remainder is due by Jan 5, 2012. Lunch is provided on Feb. 3,4,5. Accompanying non-photographer is \$50 per day.

Additional notes:

As mentioned, the workshop size is limited to 8 to ensure maximum flexibility for obtaining all types of shots. The staff is extremely helpful and will work to the best of their ability to get you tremendous shots. If possible, they will accommodate special requests such as positioning for head shots, close ups, animal behavior etc. You should bring your laptop or other means to download your images, spare batteries and a lot of memory cards. If 6 people are interested, Triple D will follow the Workshop with a special 1 day Winter Horse Round up.



Al Piecka Photography

Lodging:

There is cozy lodging available at the Triple D Log Guest Cabin. The cabin has 4 bedrooms, two baths, setting room w/fireplace, TV, full kitchen and laundry area. Arrangements can be made with Triple D. Triple D also has discount rates available at several Kalispell motels. Please contact me or Triple D for more information.

Triple D Game Farm
190 Drake Dr.
Kalispell, MT 59903
496-755-9653
tripleddgamefarm.com

Al Piecka Photography
406 Perry Ave N.
East Wenatchee, WA 98802
509-470-1669
abpiecka@hotmail.com
alpieckaphotography.com



Al Piecka Photography



Al Piecka Photography